

April 5, 1989

APR 07 1989

The Honorable Tom Scrimenti
9 West Main Street
North East, PA 16428

Dear Representative Scrimenti:

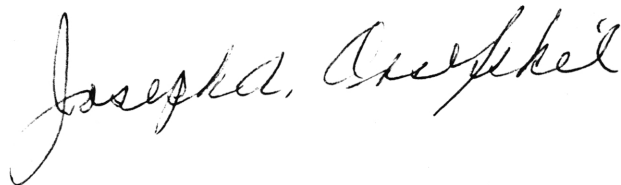
Please support the Pennsylvania State Food Purchase Program by increasing the allocation to \$12 million dollars. Food banks are facing food shortages that jeopardize the emergency food delivery system of congregate feeding programs and food pantries that the private sector is operating for the hungry.

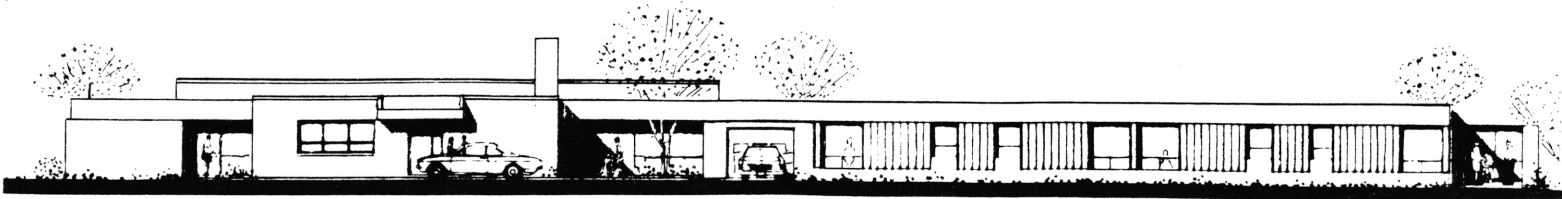
Emmaus Food Pantry located in Erie distributes more than 1200 food bags each week to the needy in the city of Erie. Last year we distributed over 45,000 to needy families and individuals.

Almost 90% of the food we distribute is obtained through the Erie Community Food Bank. This food supply is desperately needed to supplement the diet of the poor and is nutritionally necessary for the families we serve. These bags of food help to provide a balanced meal for many elderly men and women and mothers with children.

We are confident that you will do all in your power to support an increase of funding to the Pennsylvania State Food Purchase Program. Thank you for your cooperation in this important matter.

Sincerely yours,





Erie Independence House, Inc.

956 West Second Street • Erie, PA 16507-1098 • (814) 459-6161

EXECUTIVE DIRECTOR
Timothy J. Finegan

March 31, 1989

BOARD OF DIRECTORS

OFFICERS

Andrew J. Glass, President
Gerry W. Trichel, Vice President
Diane Wisinski, Secretary
Michael Hackett, Treasurer
Lilton Davidson, Assistant Treasurer
Laura Wallerstein, President Emeritus
Theodore Koenig, Director Emeritus

DIRECTORS

Wilson Barker
Charles Campagne
Ronald Coleman, Ph.D.
Gary Cottrell
Mark Dombrowski
Kenneth Dotto
Frank Duchini
Frank Fay
William Gonda
John Grode
David Grzelak
T. C. Guelcher
Mary Jo Laufenberg
S.E. (Tim) Riley, Jr.
Lee R. Schaaf
David Schlaudecker
Susan Weller
Richard Wisniewski
Frank Witgen

The Honorable Thomas Scrimenti
9 West Main Street
North East, Pennsylvania 16428

Dear Representative Scrimenti:

I am writing this letter on behalf of Erie Independence House, Inc., its residents, and all consumers involved through our social service agency. We are asking that you please increase the allocation for the Pennsylvania State Food Purchase Program to 12 million dollars. Foodbanks are facing shortages which will jeopardize the emergency delivery system of congregate feeding programs and food pantries that private, nonprofit, agencies are operating for the hungry.

As you know, most disabled individuals are on fixed incomes and are dependent on assistance from the Foodbank to provide nutritionally balanced meals. With our Attendant Care Program assisting individuals to live independently and lead productive lives in the community, the Foodbank is essential to assist in meeting the nutritional needs of our disabled consumers.

Please take the time to consider the importance of the Foodbank's programs not only for the disabled consumers, but for other groups that benefit from the program such as the homeless and single parents with fixed incomes struggling to keep their families together. This is a very worthwhile program, and funding should be increased to meet the needs of all communities in Pennsylvania. Thank you in advance for your assistance. We look forward to your reply.

Sincerely,

Timothy J. Finegan
Executive Director

pc Sister Augusta Hamel, O.S.B.

EIH



Services for the mentally-alert, severely physically disabled



A United Way Agency

THOMAS J. SCRIMENTI, MEMBER
9 WEST MAIN STREET
NORTH EAST, PENNSYLVANIA 16428
PHONE: (814) 725-8664

HOUSE POST OFFICE BOX 96
25B, EAST WING
HARRISBURG, PENNSYLVANIA 17120-0028
PHONE: (717) 787-9475



House of Representatives
COMMONWEALTH OF PENNSYLVANIA
HARRISBURG

COMMITTEES

AGRICULTURE & RURAL AFFAIRS
MILITARY & VETERANS AFFAIRS
GAME & FISHERIES

April 11, 1989

Ms. Susan J. Funk
First United Methodist
Day Care Center
707 Sassafras Street
Erie, PA 16501

Dear Ms. Funk:

Thanks for your letter of March 29, 1989 regarding the Pennsylvania State Food Purchase Program. Governor Casey has proposed an increase to \$9.5 million, or almost twenty percent. If it appears in the course of our budget deliberations that a larger increase is possible, I will of course try to reflect your position. No appropriation could be more basic or better spent.

Sincerely,

A handwritten signature in cursive script, appearing to read "Tom".

Thomas J. Scrimenti
State Representative

TJS/ldn

THOMAS J. SCRIMENTI
STATE REPRESENTATIVE

□ 9 WEST MAIN STREET
NORTH EAST, PENNSYLVANIA 16428
PHONE: (814) 725-8664

□ 202 NORTH CENTER STREET
CORRY, PENNSYLVANIA 16407
PHONE: (814) 664-9126

□ 25B, EAST WING
HOUSE BOX 202020
HARRISBURG, PENNSYLVANIA 17120-2020
PHONE: (717) 787-9475



House of Representatives
COMMONWEALTH OF PENNSYLVANIA
HARRISBURG

COMMITTEES

AGING AND OLDER ADULT SERVICES
PROFESSIONAL LICENSURE
AGRICULTURE AND RURAL AFFAIRS
DEMOCRATIC VICE CHAIRMAN

June 27, 2002

Honorable Edward G. Rendell
Governor
225 Main Capitol Building
Harrisburg, PA 17120

Dear Governor Rendell:

I am pleased to see that Pennsylvania's tourism and travel industry is taking a priority with you and your administration. However, I am concerned with the makeup of your recently announced Pennsylvania Travel and Tourism Partnership. Of the 34 members, there is no one representing the northwestern portion of the state, including Erie County, which I represent.

As the senior-most member of the Erie County delegation, I felt it was my responsibility to write to you and request that you address this situation. Perhaps a fitting solution would be to increase the number of members on the partnership and include one or two individuals from my area.

As I am sure you know, Erie County is an integral part of Pennsylvania's overall tourism industry. It is the second-leading industry in the county and was rated one of the top five family vacation destinations by a Holiday Inn survey. Presque Isle is an extremely popular tourist spot and Erie County also boasts renowned vineyards.

Lastly, I wanted to mention that I was chosen to prime sponsor legislation to create the Pennsylvania First Industries Program from your Plan for a New Pennsylvania. I am a firm believer that we need to invest more in tourism to promote our state's attributes.

Because I feel so strongly about the importance of this request, I find it incumbent upon me to implore you to work with me to find a workable solution in the very near future.

Thank you in advance for your favorable approval of this request. Please feel free to contact me if you have any questions on this matter.

Sincerely,

A handwritten signature in cursive script that reads "Tom".

Tom Scrimenti
State Representative

Contact:

Michael J. Herzing
717-787-7895, voice
717-783-6839, fax
mherzing@pahouse.net

On the Web:

[www.pahouse.com/
Scrimenti](http://www.pahouse.com/Scrimenti)



Rep. Tom Scrimenti
D-Erie



FOR IMMEDIATE
RELEASE

Pennsylvania
House of Representatives

**Scrimenti seeks northwestern Pa. member for
tourism board**

Harrisburg, June 27 – State Rep. Tom Scrimenti, D-Erie, has written to Gov. Ed Rendell requesting that a state travel and tourism board that advises the governor on tourism issues and reviews the state’s tourism and marketing plans include representation from the northwestern part of the state.

“I’ve offered to work with the governor to ensure that the Erie region – which includes historically and economically significant travel destinations – is represented in the effort to further advance what has become a leading industry in Pennsylvania,” Scrimenti said. “I’m pleased to see this administration placing a priority on travel and tourism in Pennsylvania, and I want to make sure Erie and its surrounding counties play an important role in that initiative.”

The 34-member Travel and Tourism Partnership includes the secretary of the Department of Community and Economic Development, the majority and minority chairmen of the House and Senate committees that oversee tourism in the legislature or their appointees, and various members appointed by the governor.

Scrimenti said he believes it is essential for the board to include representation from the Erie region.

“Tourism is the second-leading industry in Erie County and the region is home to many of the state’s most important tourist draws,” Scrimenti said. “From its renowned vineyards, to its historic sights like *the U.S.S. Niagara*, to its recreational destinations like Presque Isle, the Erie region is one of the top destinations in Pennsylvania and a huge contributor to the state’s overall tourism industry.”

Scrimenti is the senior-most legislator in the Erie County delegation to the House of Representatives, and is the prime sponsor of the Pennsylvania First Industries Program legislation, a key part of the governor’s economic development plan for Pennsylvania.

“Travel and tourism is a major part of that plan, and promoting the travel and tourism destinations in this region of the state is vital,” he said. “I believe it is imperative to have a representative from our region on the state board that is advising the governor on this issue and helping to develop Pennsylvania’s overall travel and tourism promotion effort.

###mjh/2003/

OK sent out
6/27

THOMAS J. SCRIMENTI
STATE REPRESENTATIVE

□ 9 WEST MAIN STREET
NORTH EAST, PENNSYLVANIA 16428
PHONE: (814) 725-8664

□ 202 NORTH CENTER STREET
CORRY, PENNSYLVANIA 16407
PHONE: (814) 664-9126

□ 25B, EAST WING
HOUSE BOX 202020
HARRISBURG, PENNSYLVANIA 17120-2020
PHONE: (717) 787-9475



COMMITTEES

AGING AND OLDER ADULT SERVICES
DEMOCRATIC CHAIRMAN OF THE
SUBCOMMITTEE ON CARE AND SERVICES
PROFESSIONAL LICENSURE
AGRICULTURE AND RURAL AFFAIRS

House of Representatives
COMMONWEALTH OF PENNSYLVANIA
HARRISBURG

May 18, 2001

Mr. Thomas F. Maas
Administrator
Oak Tree Manor Personal Care Home, Inc.
30 East Street
North East, PA 16428-1507

Dear Mr. Maas: *-Tom*

Thank you for your letter regarding proposed changes to personal care home regulations. Your thoughts and concerns on this issue are greatly appreciated.

As you know, current personal care home regulations often require administrators to work with the Department of Public Welfare, Department of Health, and Department of Aging. In an effort to reduce the amount of "overlapping" between departments' implementation of these regulations, officials from the three departments are discussing ways to better coordinate services that are, to some extent, the responsibility of each department. Issues relating to the excess and cost of regulations are still being reviewed.

While the three departments are accepting public comments on the proposed regulation changes until May 23, public hearings have not been scheduled yet. If you would like to address your opinion on the proposed regulation changes, I encourage you to contact any, or all, of the three departments. Enclosed is contact information for each department. In addition, if you are interested in testifying during public hearings on this issue, please contact me.

Mr. Thomas F. Maas
Page 2

Although potential changes to current regulations are only in a "discussion" phase, please know that I will keep your thoughts and concerns in mind if legislation is introduced in the General Assembly regarding this issue. If I may be of further assistance to you on this or any other matter, please do not hesitate to contact me.

Sincerely

A handwritten signature in black ink that reads "Tom". The signature is written in a cursive style with a large, looped initial 'T'.

Thomas J. Scrimenti
State Representative

enclosure