

VOTE REPUBLICAN
NOVEMBER 8, 1966

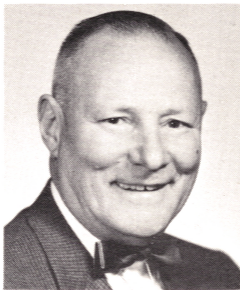
ELECT

HARVEY L. NITRAUER

to the

GENERAL ASSEMBLY

102nd District



HARVEY L. NITRAUER

"Elect A Man Dedicated To Serve You"



2004.8.6

This Year

VOTE REPUBLICAN

**ELECT THE ENTIRE
REPUBLICAN TEAM**

RAYMOND P. SHAFER - - Governor

RAYMOND J. BRODERICK - Lt. Governor

JOHN K. TABOR - Sec't'y of Internal Affairs

G. HAROLD WATKINS - - Superior Court

THEODORE O. SPAULDING - Superior Court

EDWIN D. ESHLEMAN - - U. S. Congress

C. F. MANBECK - - - - - Senate
(48th DISTRICT)

H. JACK SELTZER - - General Assembly
(101st DISTRICT)

HARVEY L. NITRAUER - - General Assembly
(102nd DISTRICT)

This Year

Vote Republican

**ELECT THE ENTIRE
REPUBLICAN TEAM**

RICHARD M. NIXON - - President

SPIRO T. AGNEW - - Vice President

RICHARD S. SCHWEIKER - U. S. Senator

JOHN B. HANNUM

Judge of Superior Court

WARNER M. DEPUY - Auditor General

FRANK J. PASQUERILLA - State Treasurer

EDWIN D. ESHLEMAN - U. S. Congress

(16th DISTRICT)

H. JACK SELTZER - - House of Rep.

(101st DISTRICT)

HARVEY L. NITRAUER - House of Rep.

(102nd DISTRICT)



**RE-ELECT
REPUBLICAN
RE-ELECT
REPUBLICAN
RE-ELECT
REPUBLICAN
RE-ELECT
REPUBLICAN
RE-ELECT
REPUBLICAN**



**HARVEY L.
NITRAUER**

**RE-ELECT
REPUBLICAN
RE-ELECT
REPUBLICAN
REPRESENTATIVE
102ND
DISTRICT**

2004.8.7